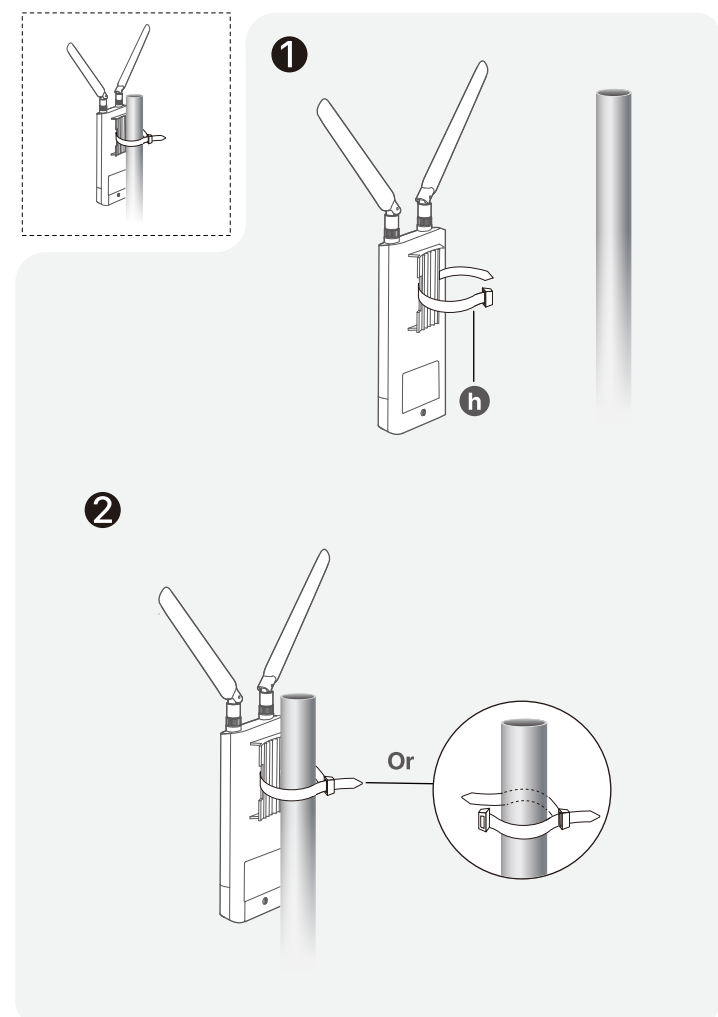
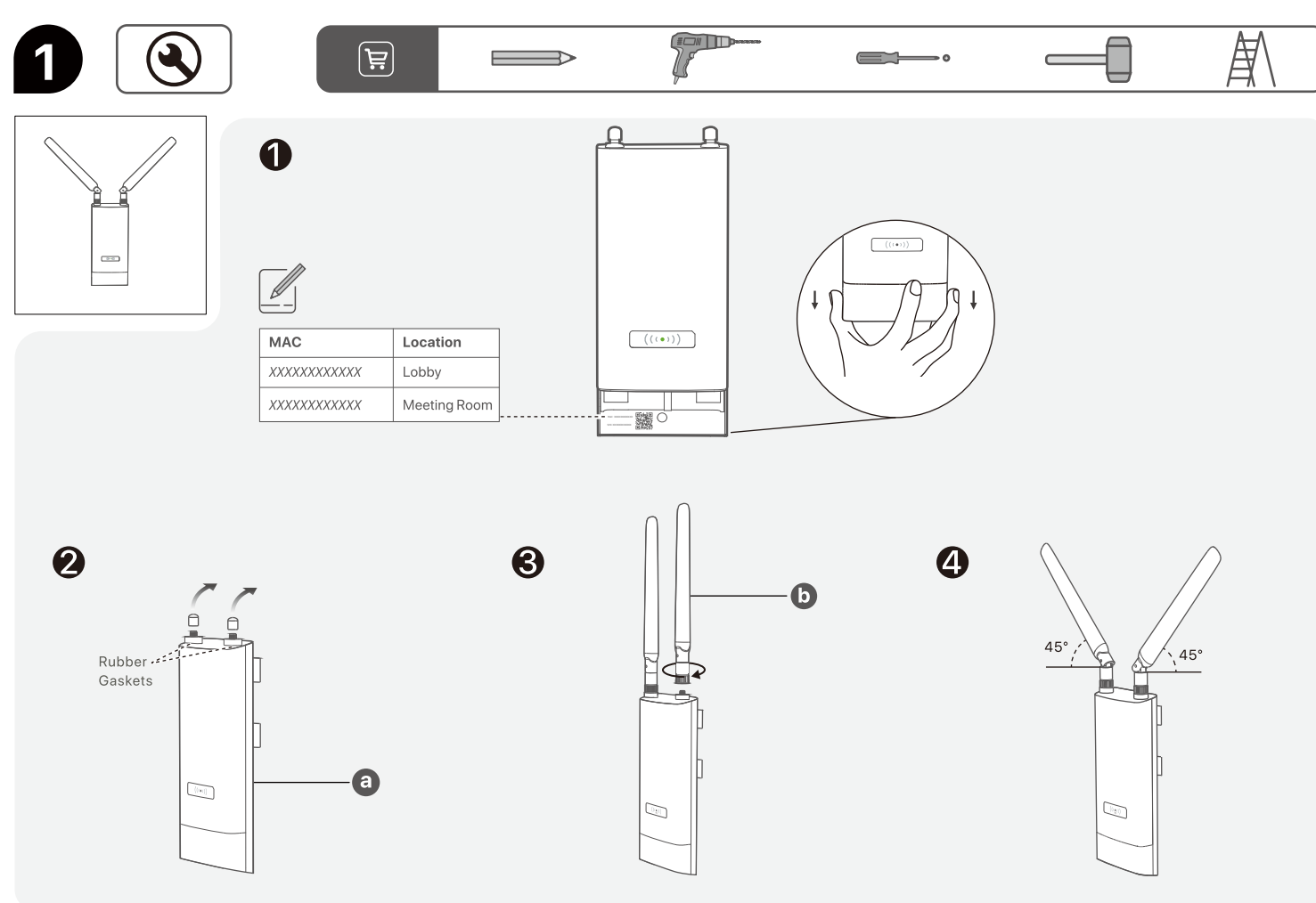
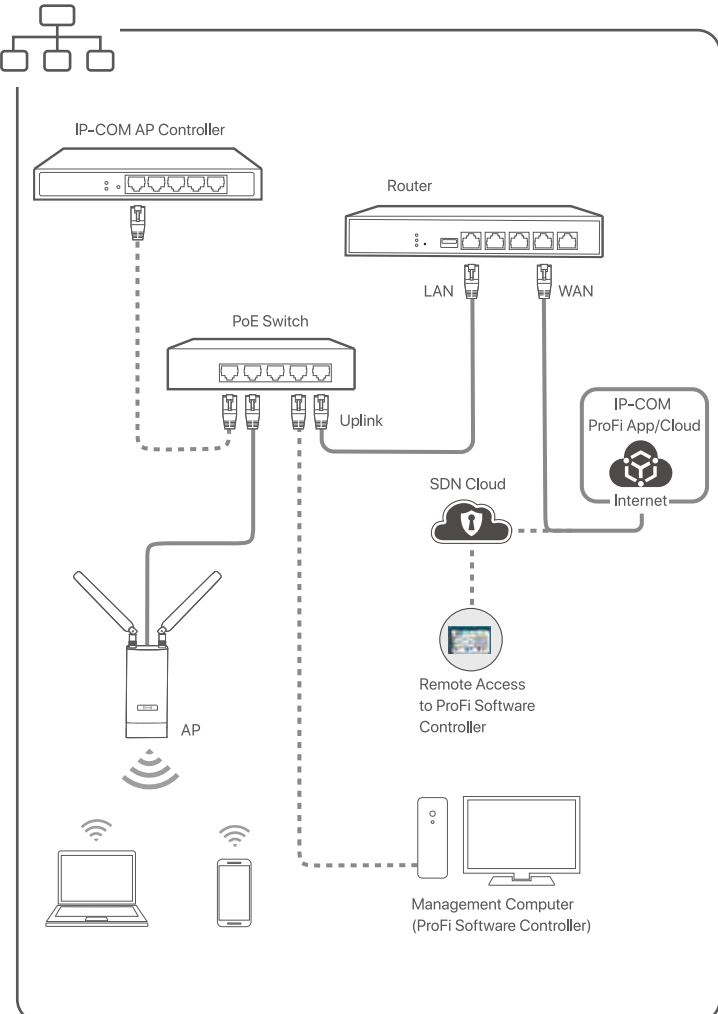


# Quick Installation Guide

Indoor/Outdoor Wi-Fi Access Point  
iUAP-AC-M&Pro-6-M

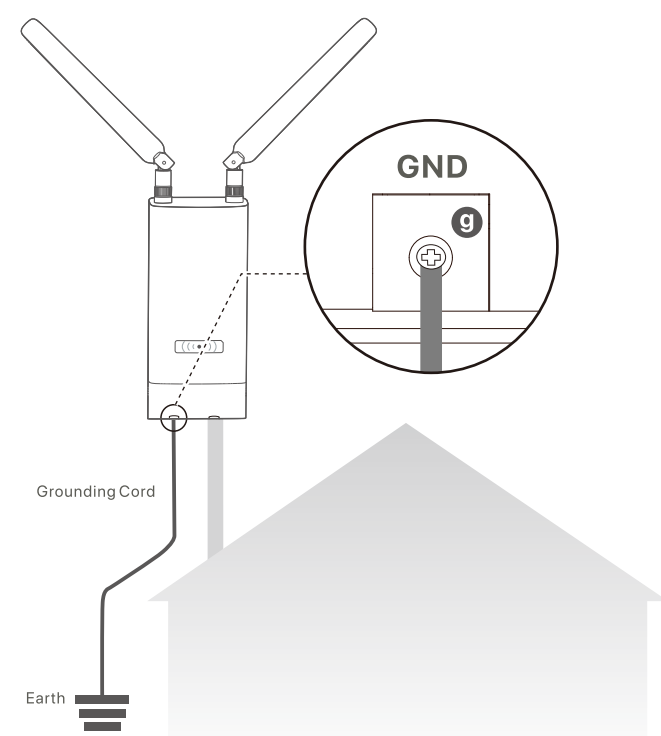


iUAP-AC-M is used for illustration here unless otherwise specified. The actual product prevails.



Connect the **GND** terminal of the AP to a grounding terminal connected to the earth or building to protect the AP from overvoltage and overcurrent caused by lightning and ESD.

1. Connect one side of a grounding cord to the GND terminal of the AP using the grounding screw.
2. Remove the ground wire notch of the port cover and pass the ground wire, then place back the port cover.
3. Connect the other side of the grounding cord to the grounding terminal connected to the earth or building.




- Ensure that the internet where the AP is deployed is connected.
- If the AP is managed by the IP-COM Wi-Fi cloud controller or router, log in to the web UI of the controller or router to check the AP's name and password of the AP. If the AP is not managed by any network device, the AP's Wi-Fi-only has default Wi-Fi names: **IP-COM\_XXXXXX** and **IP-COM\_XXXXXX\_50** (XXXXXXX is the last six digits of the MAC address on the AP label after removing the front cover).


Use IP-COM ProFi cloud


- Before managing the AP on the cloud, add the AP to the IP-COM ProFi App or IP-COM ProFi Cloud (<https://imsen.ip-com.com.cn>) first. For more details, see help document in **Help Center** of IP-COM ProFi App or IP-COM ProFi Cloud.

### Method 1: Add the AP over Wi-Fi

1. Get the IP-COM ProFi from [Google Play](#), [App Store](#), or via QR code.
-   
Download on the  
App Store

Or

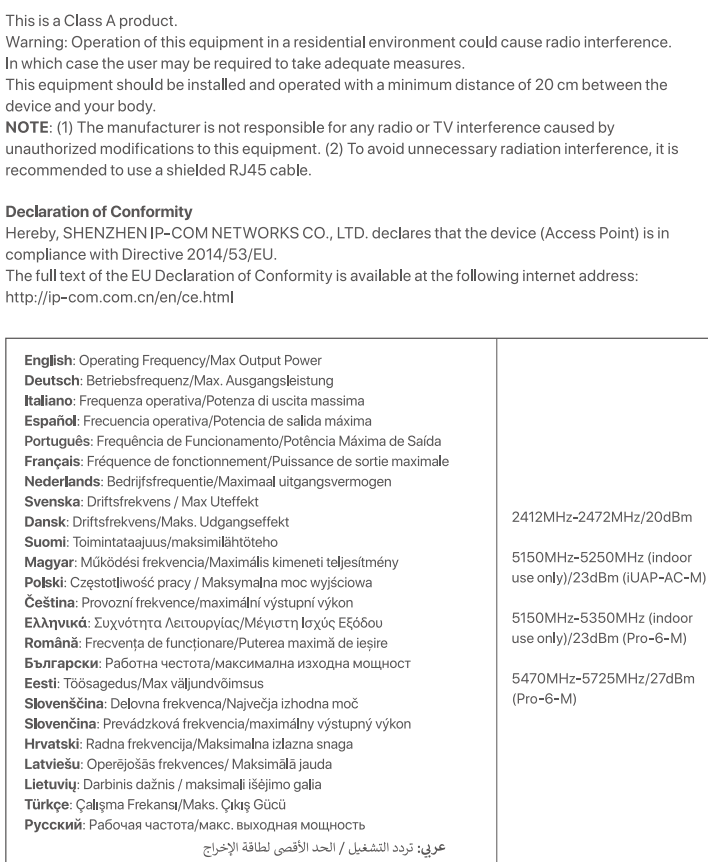


  
IP-COM ProFi
2. Connect your mobile device to the Wi-Fi of the AP.
3. Open the App, and tap an existing project or create a new one.
4. Tap the pop-up window that shows the AP is detected, and add it to the project.

### Method 2: Add the AP with Unique Cloud Code

1. Get the **Unique Cloud Code** from IP-COM ProFi App or IP-COM ProFi Cloud.
2. Refer to **Use Web Browser** to log in to the web UI of the AP, enable Cloud Maintenance and paste the **Unique Cloud Code**.
3. Add the AP to the project through **Device-joining Alert** on IP-COM ProFi App or IP-COM ProFi Cloud.

- Before operating, read and follow these precautions to prevent accidents.
- Device operating temperature: -30°C/0°C ~+227°C/122°F (IAPC-AE-NC); -30°C/0°C ~+125°C/257°F (IAPC-AE-NC). Power adapter operating temperature: 0°C/32°F ~+125°C/257°F.
- The device can be used safely outdoors. The power adapter is for indoor safe use only.
- The AP is suitable for mounting at a height of 2-6 meters.
- Do not use the device in a place where wireless devices are not allowed.
- Use a power adapter or PoE power supply device with the required specifications. Do not use the power adapter or PoE power supply device if it is damaged.
- If the device needs power adapter supply, the main plug used as the power socket is the disc-shaped power socket. The power socket should be installed near the device and easily accessible.
- The device is waterproof, but avoid prolonged water immersion for safety and durability.
  - Keep the device away from fire, high electric field, high magnetic field, and inflammable and explosive items.
  - If such phenomena as smoke, abnormal sound or smell appear when you use the device, immediately stop using it and disconnect its power supply, unplug all connected cables, and contact the after-sales service personnel.
  - Do not disassemble the device or use the device with unauthorized modifications; otherwise, the warranty and qualified service personnel shall be voided.
- Refer all servicing to qualified service personnel.
- Disconnect the power source during servicing.
- For the latest safety precautions, see [Safety and Regulatory Information on www.ip-cm.com.cn](#).



### Use ProFi Software Controller

Visit [www.ip-com.com.cn](http://www.ip-com.com.cn) to download ProFi Software Controller to your computer for management. For details, get the user guide of the **ProFi Software Controller** on [www.ip-com.com.cn](http://www.ip-com.com.cn).


### Use IP-COM Hardware Controller

IP-COM hardware controller is an IP-COM AP controller or IP-COM router with AP management function. If there is an IP-COM hardware controller in the LAN, you can manage the APs in batches using the hardware controller. For details, get the user guide of the hardware controller of the model on [www.ip-com.com.cn](http://www.ip-com.com.cn).


### Use Web Browser

1. Connect your Wi-Fi-enabled device to the Wi-Fi of the AP.

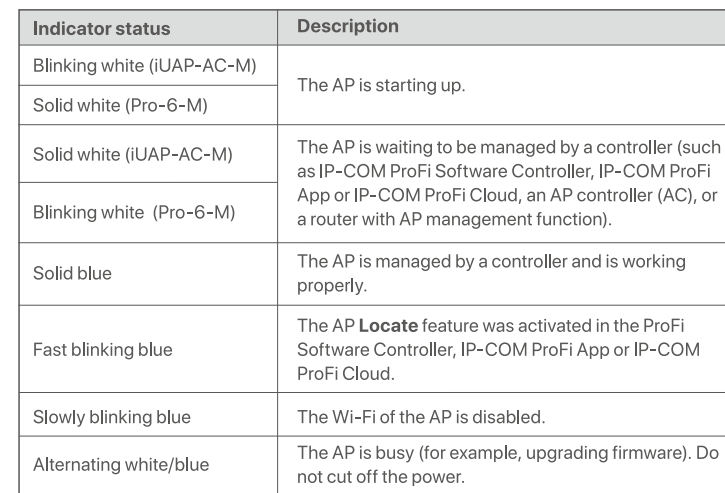
---

 **Note**  
If **Unsecured Network** prompts on the page, ignore it.
2. Start a web browser and enter **http://pcwll.com** in the address bar.
3. Follow the on-screen instructions for initial login.

---

 **Note**  
For initial setup or after a reset, set new login and Wi-Fi passwords for privacy and security (The longer the password, the stronger the protection). The character limit and composition rules for

The indicators, buttons and ports may vary with AP models. Please refer to the actual product you purchased. iUAP-AC-M is used for illustration in the following figures.



This equipment has been tested and found to comply with the limits for a Class A digital device, pursuant to Part 15 of the FCC Rules. These limits are designed to provide reasonable protection against harmful interference when the equipment is operated in a commercial environment. This equipment generates, uses, and can radiate radio frequency energy and, if not installed and used in accordance with the instruction manual, may cause harmful interference to radio communications. Operation of this equipment in a residential area is likely to cause harmful interference in which case the user will be required to take whatever measures may be required to correct the interference.

Operation is subject to the following two conditions: (1) This device may not cause harmful interference and (2) this device must accept any interference received, including interference that may cause undesired operation.

**Radiation Exposure Statement**

This device complies with FCC radiation exposure limits set forth for an uncontrolled environment and it also complies with Part 15 of the FCC RF Rules.

This transmitter must not be co-located or operated in conjunction with any other antenna or transmitter.

This equipment should be installed and operated with a minimum distance of 20 cm between the device and your body.

**Caution**

Any changes or modifications not expressly approved by the party responsible for compliance could void the user's authority to operate the device.

**Operating Frequency**

2412-2462MHz, 5180-5242MHz, 5745-5825MHz (SMPA-M)

2412-2462MHz, 5180-5242MHz, 5745-5825MHz (Pro-M)

**NOTE:** (1) The manufacturer is not responsible for any radio or TV interference caused by unauthorized modifications to this equipment. These limits are designed to provide reasonable protection against harmful interference to other licensed users. (2) To avoid unnecessary radio interference, it is recommended to use a mechanical or electronic equipment.

**Recycling**

This product bears the selective sorting symbol for Waste Electrical and Electronic Equipment (WEEE) in accordance with the European Union Directive on Waste Electrical and Electronic Equipment (2012/19/EU) in order to be recycled or dismantled to minimize its impact on the environment.

Use the choice to give your product to a competent recycling organization or to the retailer when he has a mechanical or electronic equipment.

Q1: I cannot log in to the web UI of the AP by visiting <http://ipcwifi.com>. What should I do?

- Ensure that the AP is working properly and the Wi-Fi-enabled device is connected to the correct Wi-Fi.
  - A2:
    - Refer to the Wi-Fi address to log in to the web UI of the AP.
    - Log in with **10.16.16.16**: Refer to the IP address (10.16.16.X, X ranges from 1 to 254 and is unused) of the Wi-Fi-enabled or wired device to the AP address within the same network segment as the AP.
    - Log in with the new IP address: If the AP obtains an IP address from the DHCP server, you can first check the new IP address from the DHCP server, and then use it to log in. For info, see [192.168.0.254](#) to log on to the web UI of the AP.
  - Clear the cache of your browser or replace the web browser, and try logging in again.
  - Refer to [Q4](#) to reset the AP.
- A3: The IP-Conn ProPi App fails to add the AP to the project. What should I do?**
- A2:
- Ensure that the internet where the AP is deployed is connected.
  - Ensure that the firmware of the AP is the latest version.
  - Reboot the AP.
  - Refer to [Q4](#) to reset the AP.
- A3: The controller fails to detect the AP. What should I do?**
- A2:
- Ensure that the physical connections are correct and the AP is same VLAN as properly.
  - Ensure that the network where the controller is the same as the AP.
  - Reboot the AP.
  - Ensure that the firmware of the controller and the AP is the latest version on [www.ip-conn.com.cn](#).
  - Refer to [Q4](#) to reset the AP.

**Q4: How to reset the AP?**

- A4:** When the AP is idle, hold down the reset button (Reset) for about 8 seconds. Wait for about 1 minute until the AP is reset successfully.



This product bears the selective sorting symbol for Waste Electrical and Electronic Equipment (WEEE). This means that this product must be handled pursuant to European directive 2012/19/EU in order to be recycled or dismantled to minimize its impact on the environment. User has the choice to give his product to a competent recycling organization or to the retailer when he buys a new electrical or electronic equipment.

## Copyright ©2025 ■

This documentation (including pictures, images, and product specifications, etc.) is for reference only. To improve internal design, operational function, and/or reliability, IP-COM reserves the right to make changes to the products described in this document without obligation to notify any person or organization of such revisions or changes.

V2.0 Keep for future reference

V2.0 Keep for future referen